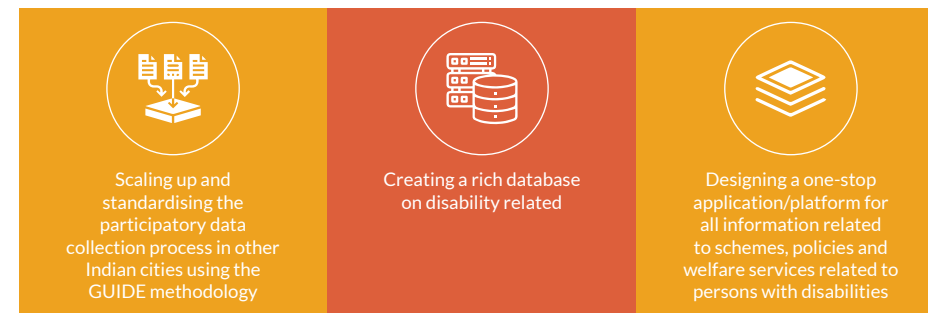




KEY OUTPUTS

- **Methodology Report:** Development of a contextualised methodology for participatory data collection, analysis, and use on issues related to disability inclusion at the city level.
- **Primary data on persons with disabilities** and their access to basic and essential services in the city
- **Disability Inclusive City Profile:** Designing an accessible report presenting the data and exploring key policy and practice issues emerging from it.
- **Scorecards:** Formulation of a detailed comparative data on specific information, helping policymakers to quickly understand and respond to key issues.

WAY FORWARD



MEET THE TEAM



Utsav Choudhury
Program Manager



Veronica Q.W.
Program Officer - Learning and Outreach



Abhisikha Das
Program Associate



Monica Thakur
Program Associate

FIELD TEAM



Satish Mishra
Field Coordinator



Aarati Pal
Field Researcher



Pratima Yadav
Field Researcher



Minu Ray
Field Researcher



Monika Prajapati
Field Researcher



Rahul Rajbhar
Field Researcher



Sandip Kumar Singh
Field Researcher



Ujala
Field Researcher



Ranjana Rajbhar
Field Researcher

Contact us: National Institute of Urban Affairs, 1st Floor, Core 4B,
India Habitat Centre, Lodhi Road, New Delhi - 110003, India

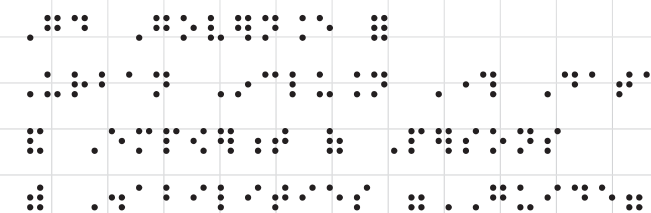
Telephone: (91-11) 24634971, 24643576

• Email: director@niua.org, thebasilproject@niua.org, uchoudhury@niua.org

• Website: www.niua.org @Niua_India



Good Governance for Urban Inclusion Through Data and Empowerment of Persons with Disabilities



An initiative by:

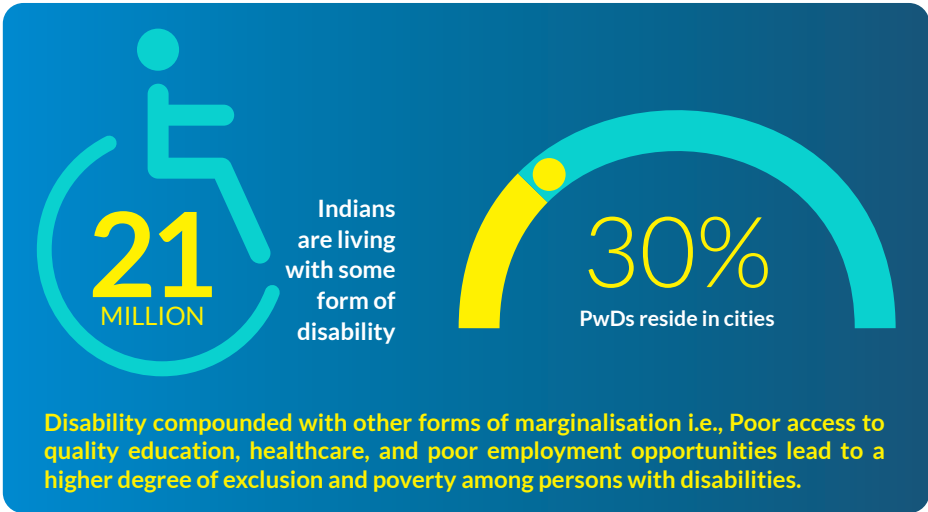
National Institute of Urban Affairs (NIUA)

Supported by:

The United Nations Educational, Scientific and Cultural Organization (UNESCO) India

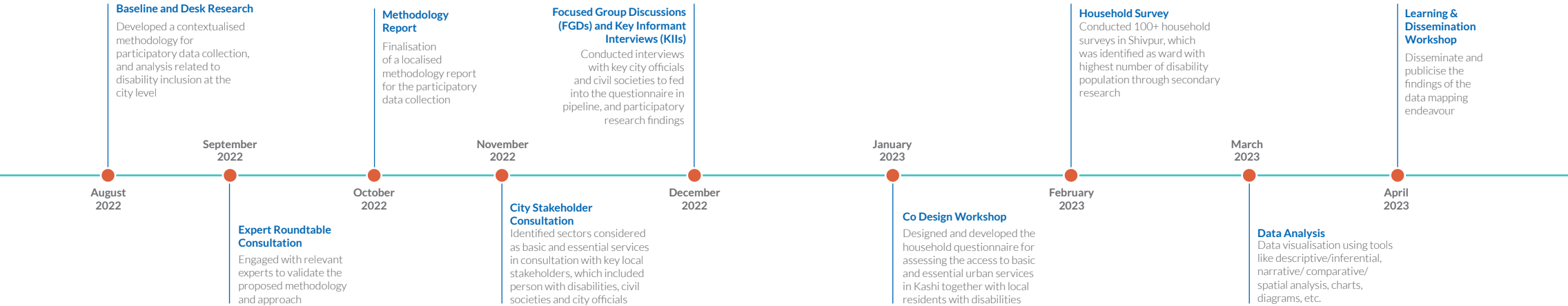


DID YOU KNOW?

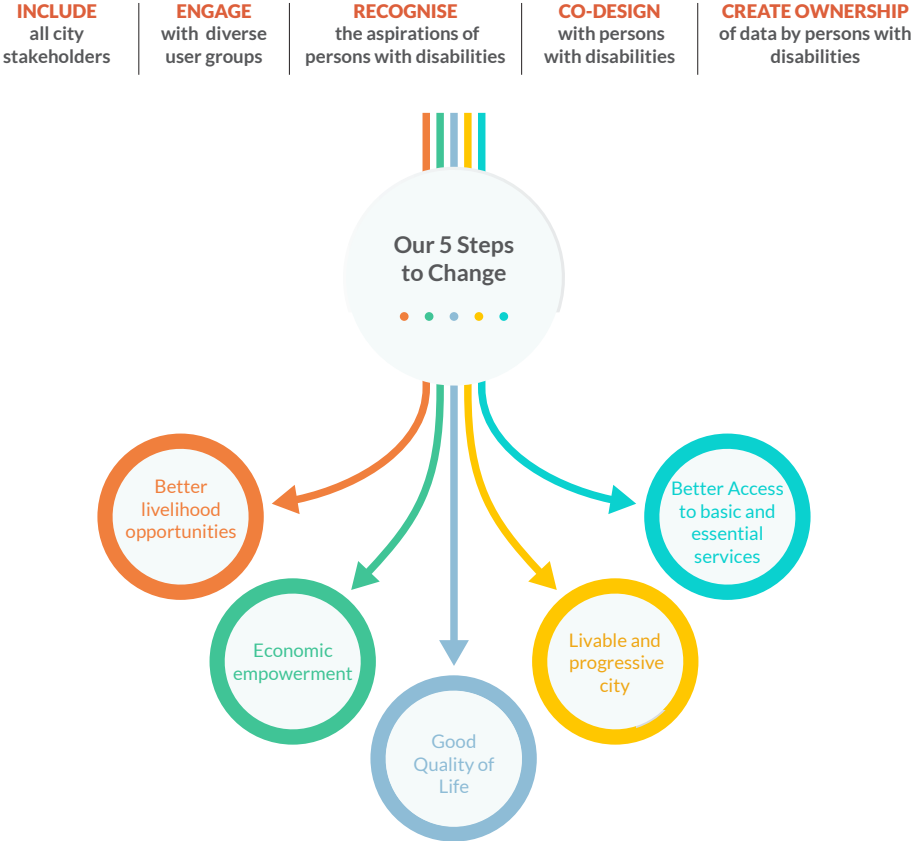


Good Governance for Urban Inclusion Through Data and Empowerment of Persons with Disabilities (GUIDE)

NIUA and UNESCO have come together to develop the GUIDE initiative, which aims to strengthen participatory data systems related to the inclusion of persons with disabilities in Indian cities, particularly in the wake of the COVID-19 pandemic. GUIDE pilot process tested to enhance the involvement of persons with disabilities in the collection, compilation, and analysis of reliable data on issues that affect them within cities, the project aims to create a replicable blueprint to enhance participatory data capacities on issues related to disability inclusion across India's cities.



OUR APPROACH



TAKEAWAYS

-  ASSISTIVE TECHNOLOGY

 - Accessible information on assistive devices
 - Affordable and subsidised assistive devices
 - Human centred design that caters to the diverse needs of persons with disabilities
-  FINANCIAL SERVICES

 - Universally accessible banks and ATMs
 - Improved opportunities to access loans/ credits for persons with disabilities, especially women with disabilities
 - Bridging the financial setbacks faced especially because of covid-19
-  EDUCATION

 - Train and sensitise teachers and students on disability inclusion
 - Reasonable accommodation in education as and where necessary
 - Universally accessible buildings and educational infrastructure
-  HOUSING

 - Transparency in service dissemination
 - Accessible housing on ground floor
 - Sensitization among local residents
-  RECREATION & TOURISM

 - Universally accessible tourist places and attractions, especially ghats and religious places
 - Better support services for tourists with disabilities
 - Provide inclusive tourism packages
-  HEALTHCARE

 - Access to easy and subsidised healthcare services
 - Dedicated healthcare cell for PwDs
 - Provision of assistive devices under healthcare services
-  LIVELIHOOD

 - Provision of dignified employment opportunities
 - Training and upskilling of persons with disabilities with proper skill mapping
 - Accessible information on job opportunities
-  WASH

 - Universally accessible public and community toilets (PT/CT)
 - Install signages in PT and CT
 - Include menstruation hygiene management facilities
-  TRANSPORTATION & MOBILITY

 - Universally designed transport system
 - Robust Information system for railways
 - Standardisation of transport fare