

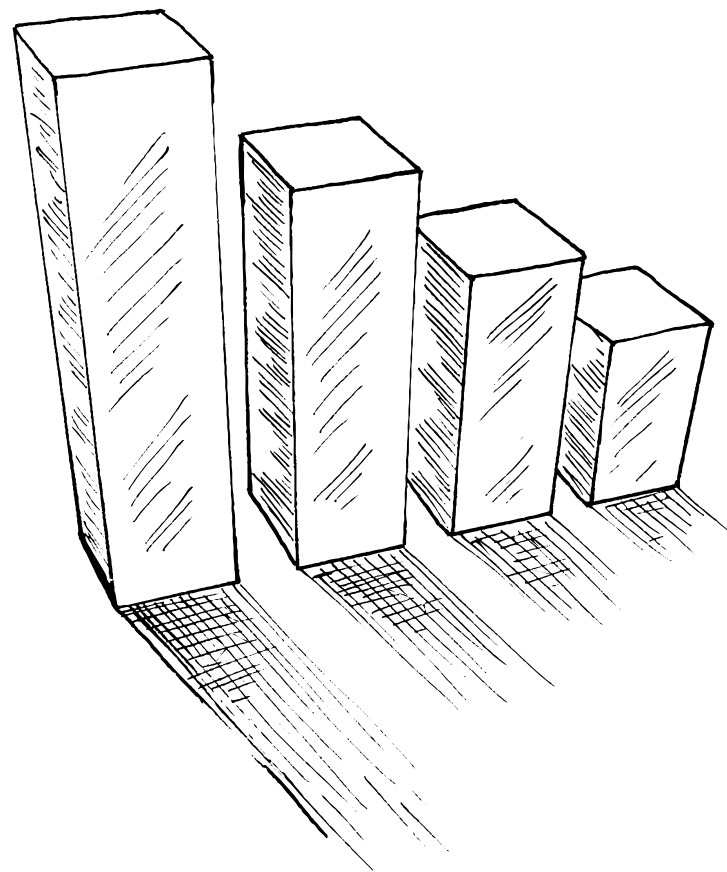


# Local Economic Intelligence Platform



TEAM LED - INDIA SMART CITIES FELLOWSHIP PROGRAM

# The Great Economic LEIP



## ISSUE IDENTIFIED

### LOCAL ECONOMY

- Lack of Data-led Economic Planning and Scheme Design
- Siloed Approach to Sectoral Development

## PROPOSED SOLUTION

### LEIP

- Data Aggregation Platform
- Decision Support System
- Economic Intelligence Generation

## PILOT CITY

### THIRUVANANTHAPURAM

02

# Benefits

03

Beneficiaries

Objectives

Administrators, Planners, Policy Makers, Development Commissioners, Elected representatives

Assistance with local economic planning

Investors, Administrators, Elected representatives of all levels

Informed Decision Making

ULB, District, State Administration, Academic Institutes

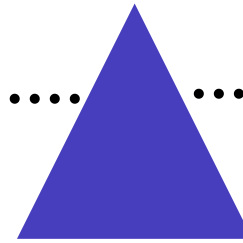
Data-led policymaking and scheme design

Citizens, ULB, Researchers, Investors, Administrators

Interactive visualizations

Researchers, Investors, Elected Representatives

Aggregated local economic data platform



INDIA SMART CITY FELLOWSHIP PROGRAM

PROJECT  
INTRODUCTION:

# Process of Ideation and Project Proposal

LEIP | Team LED

04

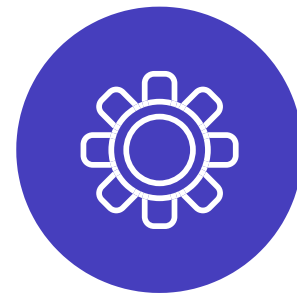


# Process of ideation



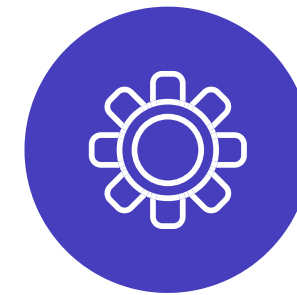
## COHORT INPUTS

Ideation process within the cohort with fellows from diverse backgrounds contributing to the core of LEIP



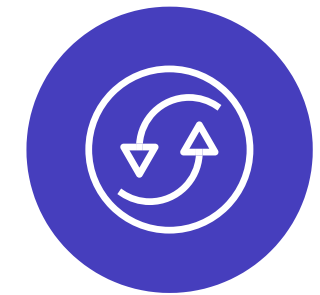
## THEME FINALIZATION

Local Economic Development in the backdrop of Atmanirbhar Bharat, Vocal for Local and Atlas of economic complexity



## CONSULTATIONS

Consultations with mentors, field experts and literature review



## PROJECT PROPOSAL

Submitted

Submitted project proposal by synthesising ideas, literature and the needs of India's urban economy

INDIA SMART CITY FELLOWSHIP PROGRAM

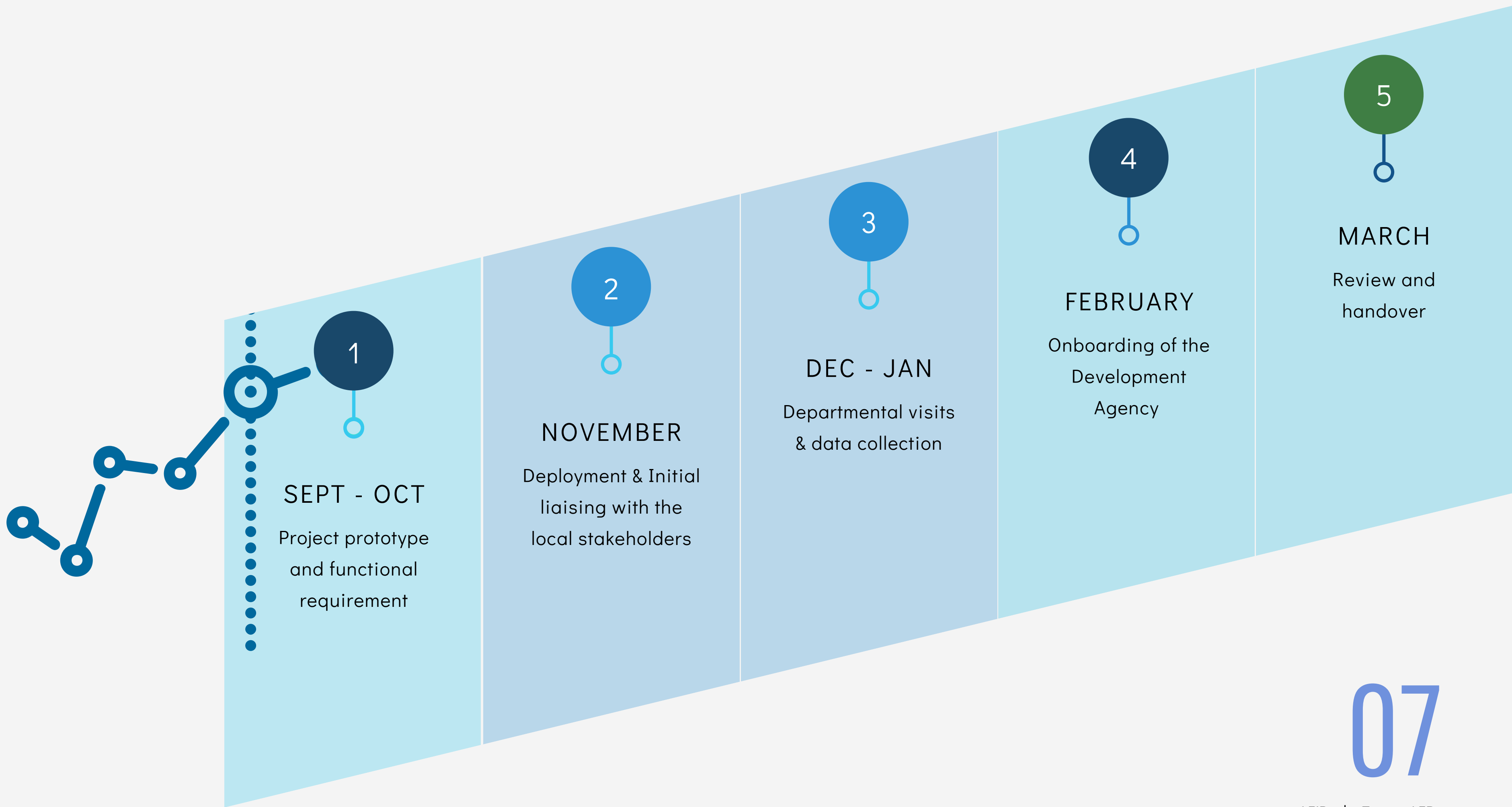
PROJECT INTRODUCTION:

# Development of LEIP

LEIP | Team LED

06





# Local Engagement - Thiruvananthapuram



## Data Collection

Visited 32  
departments - who  
are major  
stakeholders of the  
local economy



## Mentorship

World Resources  
Institute  
  
University of Kerala  
  
SGST Bhavan  
  
Tax consultants



## Recalibration

Shri Vinay Goyal IAS,  
District Development  
Commissioner  
  
Shri Bala Kiran IAS  
DO Census - AP  
  
Smt Gayathri Nair IES,  
Kerala State Planning  
Baord



## District Collector, Thiruvananthapuram



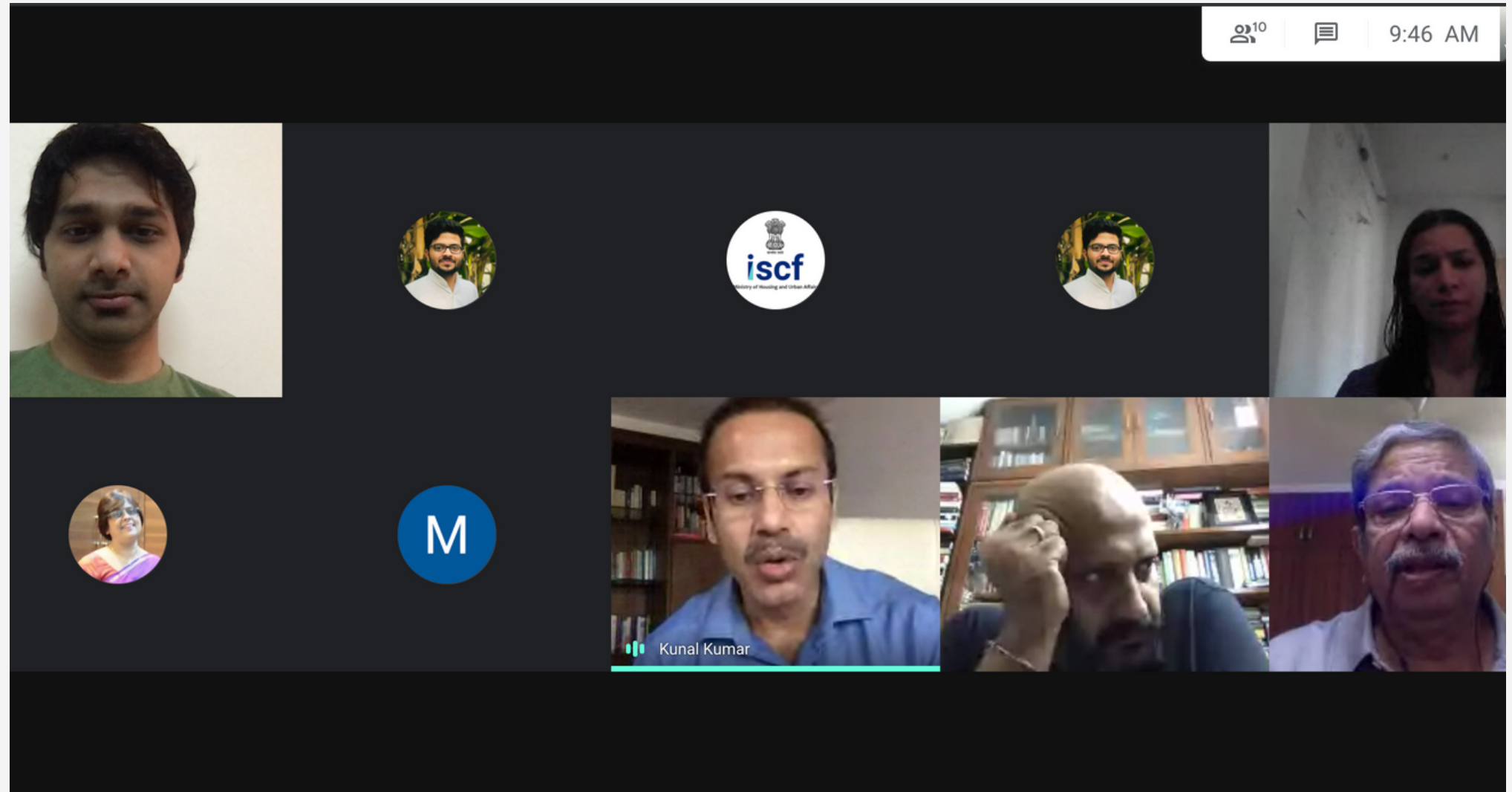
## Higher Education Department



Department of Economics and Statistics



Consultation with Mentors



# Challenges

## **Local Election**

Local Election and the model code of conduct imposed thereof delayed approvals by 2 weeks during the 12 week deployment

---

## **Recalibration**

Frequent recalibration of the scope lead to change in the methodology and statistical approaches for calculation, due to the team was back to design and exploration phase.

---

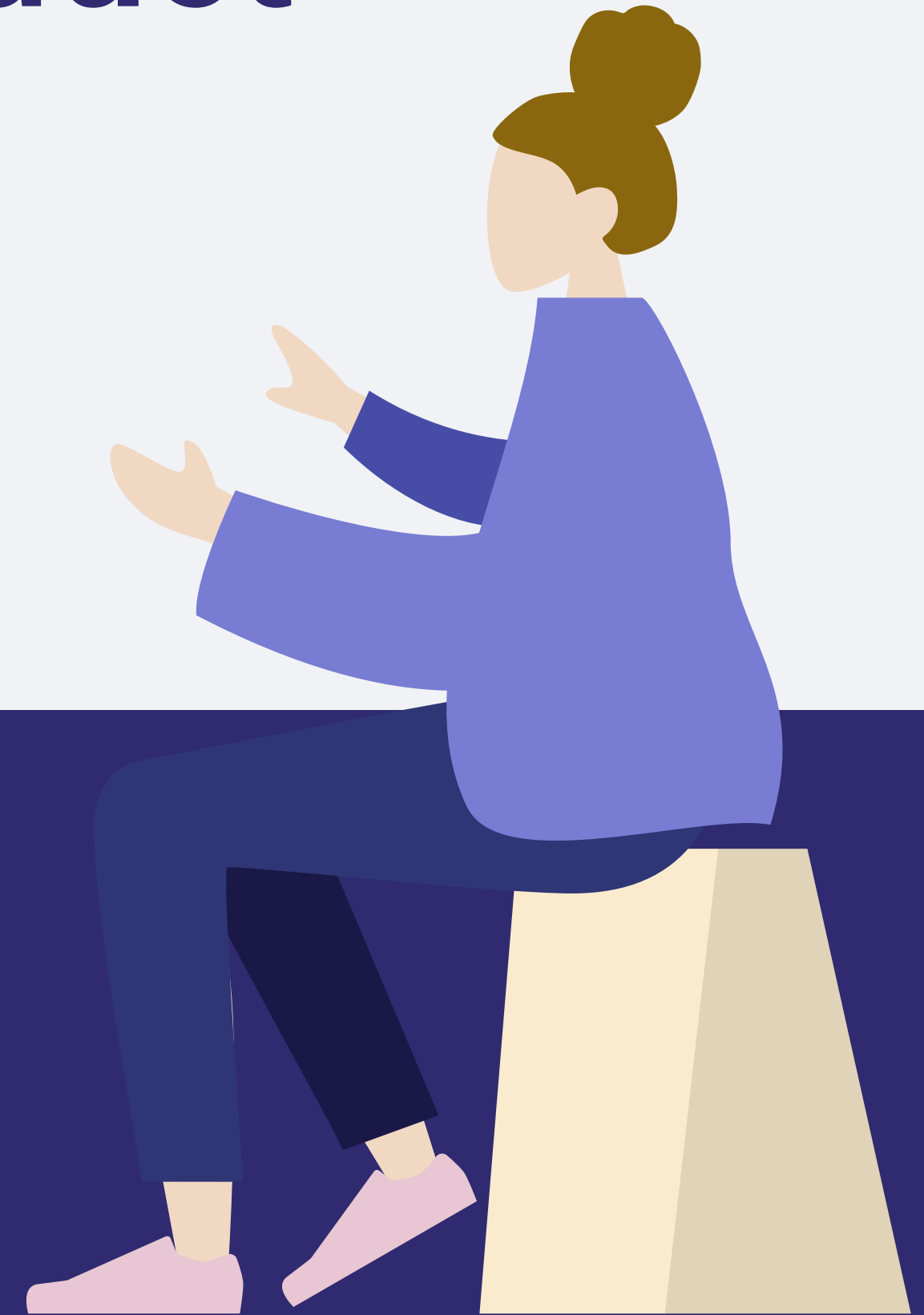
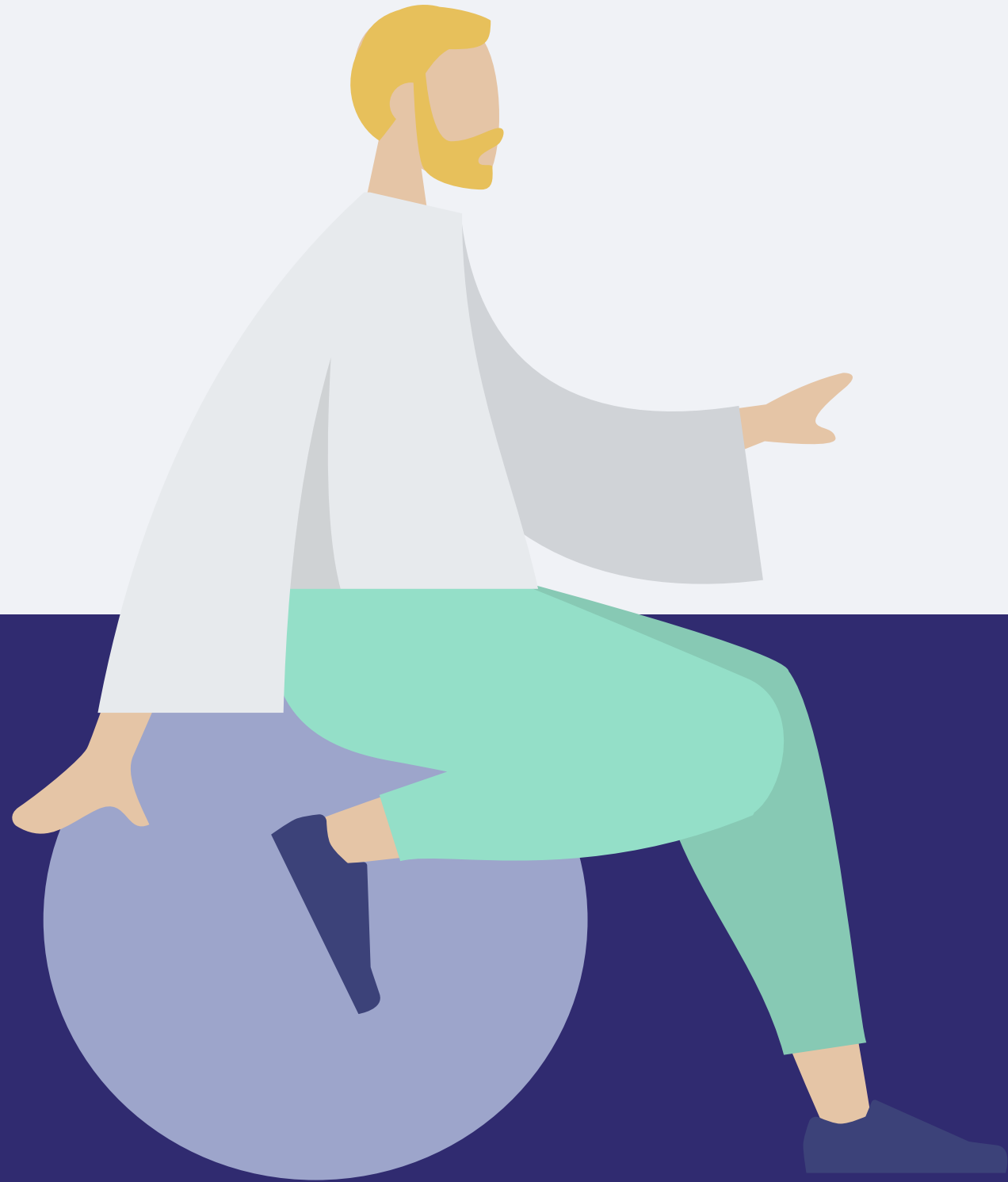
## **Project Delays**

Delay in deployment meant shorter timeframe to collect data, analyse and develop the product

---

# Developed Product

[Click here to LEIP](#)

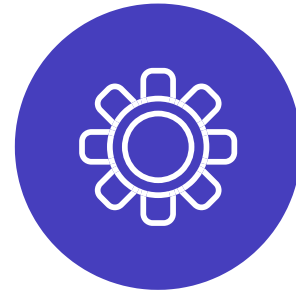


# Critique of the Project



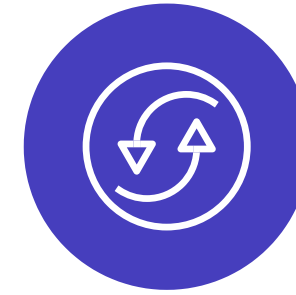
## EXCLUDING THE INFORMAL SECTOR

As a first step towards making an economic intelligence platform, the team had to focus on the aspects of the economy for which data was easily available



## DATA STANDARDIZATION

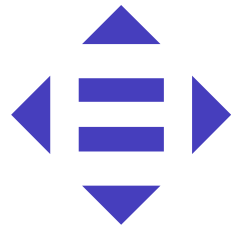
Data had to be standardized for calculations. While scaling the product to different cities, data standardization will be an additional exercise



## DEPENDENCE ON LITERATURE

Due to time constraints, literature was used to assign weightages and define relationships between the economic variables and indicators

# Phase II - Scalability & Replicability



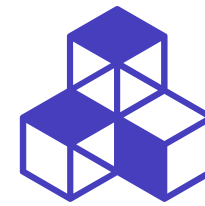
## ACROSS CITIES

On inputting the data for a set of indicators, the platform will generate analysis for all four objectives. The platform is also being developed to input data from a number of sources



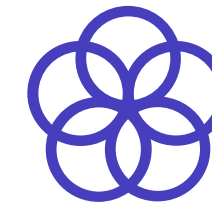
## ACROSS SECTORS

The decision support system will be expanded to numerous sectors in the city to make the platform more holistic.



## DYNAMIC PLATFORM

Depending on the local economic conditions - the platform and its output can be dynamically reoriented. Machine learning and time-series data is being considered as part of phase II



## DISCOVERING ECONOMIC COMPLEXITIES

Research on relationships between indicators can be deepened and more number of cities and sectors will help the platform understand economic complexities further refining its output

***Potential Collaborators: CDG - NIUA & WRI***

# Our Mentors



Dr. Debjani Ghosh, Associate Professor, NIUA



Dr. Amit Kapoor, Honourary Chairman, Institute For  
Competitiveness

# Team LED



AMAN SINGH  
RAJPUT  
FELLOW



RADHA  
KARMARKAR  
FELLOW



VIVIN  
NAIR  
FELLOW



**LEIP**