



India Smart Cities Mission Fellowship Program
Ministry of Housing & Urban Affairs
Government of India



EXTERNAL MENTOR : DR. IRUDAYA RAJAN | INTERNAL MENTOR : DR. DEBOLINA KUNDU



Cumulative Project Presentation

ANANTA KUKREJA | ASMEETA DAS SHARMA
THOMAS PEGU | YOGADA JOSHI

Contents

01	Problem Statement	
02	Ideation	
03	Proposed solutions (City)	
04	In the City - Engagements and Activities	
05	Project Proposal	
		06
		Pilot
		07
		Critique
		08
		Way Forward

Who is a Migrant?



Problem Statement

Lack of **reliable, updated data** of the floating population in a city inhibits **adequate service provisioning** leading to the **invisibility and exploitation** of the migrant population.



02. Ideation



Data on Migrants is..

Last conclusive figures of internal migrants is derived from Census 2001.

Complete migrant data from Census 2011 still to be released.

Various data sources of migration in India include NSSO(2007-08) under MOSPI, Census(2011), Economic Survey of India (2017-18), Ministry of Finance.

Each Ministry uses a **different definition of 'Migrant'**.

Outdated

New data has been collected in silos during the COVID-19 pandemic

Captured by multiple independent NGOs, District Labour Offices, Police Stations, NMIS portal by NDMA and state travel portal amongst others.

The data collected however, remains static in nature.

Static

Schemes and laws remain underutilized giving **misleading numbers for the migrant population.**

Worker description is defined as per tenure not as per occupation

Migrant Source state is captured in the Census data without capturing the district/city

Circular migration is not captured

Incomplete

Key Issues Identified

No portability of
Social Security
Benefits

Lack of
comprehensive +
collaborative
approach

No granular
source -
destination data

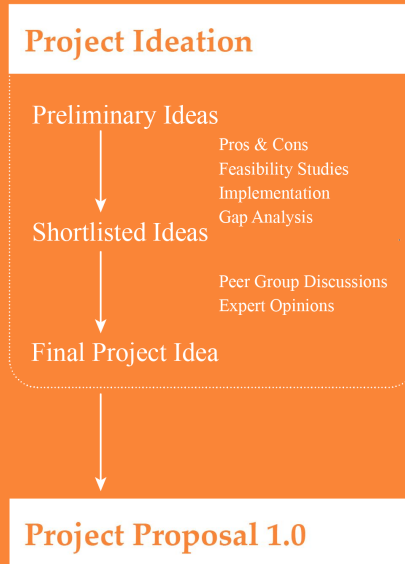
Relief and
compensation
based approach

Outdated, static
and **incomplete**
Data

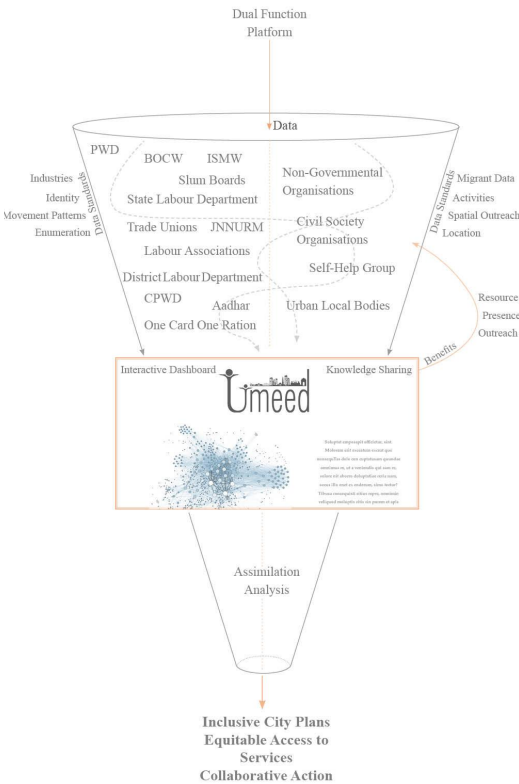
Siloed Tech
initiatives

No one stop
information source
for migrants for
city orientation

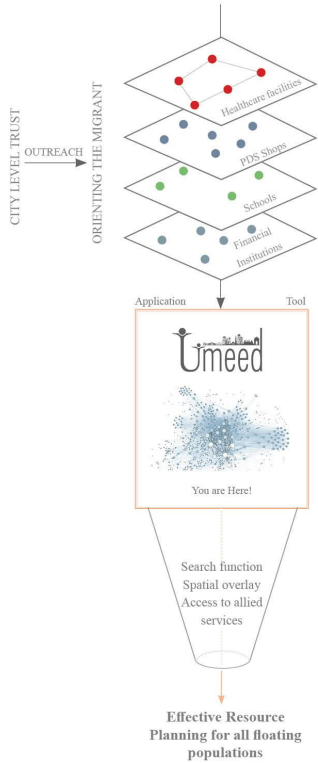
03. Proposed Solutions



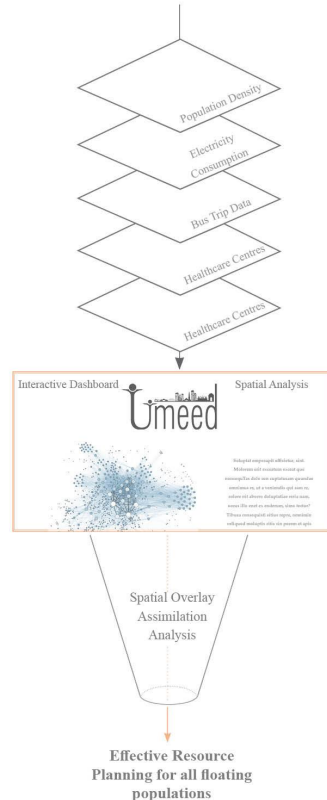
Possible Intervention 1



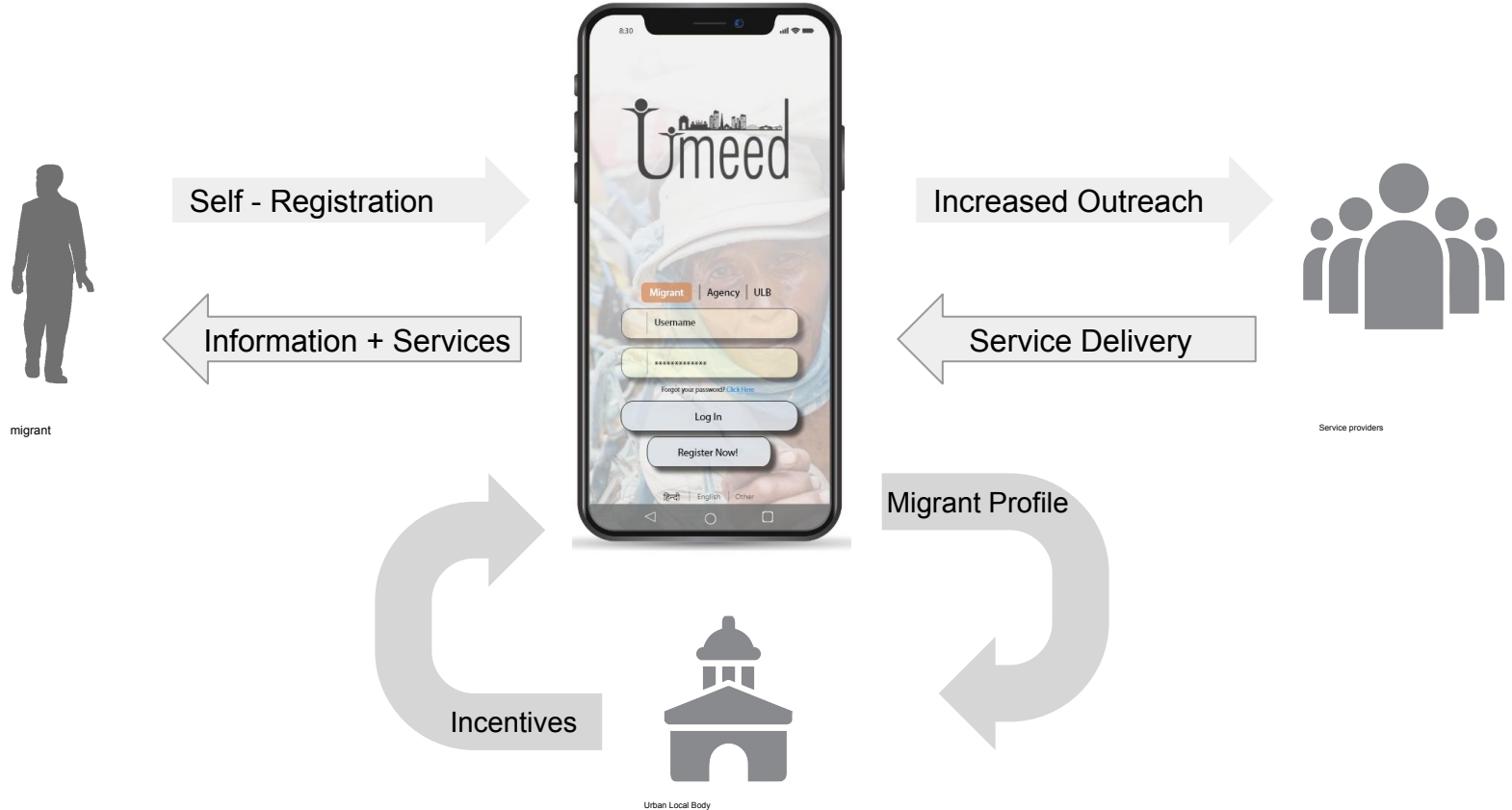
Possible Intervention 2



Possible Intervention 3



What?



Proposed Solution



City Selection Matrix

Sl	City	State	Population Census 2011	Covid scores	State Capital (proxy for healthcare infra and better access to administration)	ICCC	Language	Elections due	City Performance ranking - SCM	Distance Score	Total Score
1	Bhopal	MP	1798218	0.96	1.2	0.5	0.5	0	0.5	0.3	8.08
2	Jaipur	Rajasthan	3046163	0.72	1.2	0.5	0.5	0	0.2	0.5	7.76
3	Bhubaneswar	Odisha	837737	0.96	1.2	0.5	0.5	0.5	0.2	0.1	7.38
4	Surat	Gujarat	4466826	0.96	0	0.5	0.5	0	0.5	0.2	7.26
5	Faridabad	Haryana	1809733	1.2	0	0.5	0.5	0.5	0.1	0.5	6.9
6	Ahmedabad	Gujarat	5633927	0.96	0	0.5	0.5	0	0.5	0.3	6.88
7	Vadodara	Gujarat	1666495	1.2	0	0.5	0.5	0	0.5	0.3	6.88
8	Udaipur	Rajasthan	451100	1.2	0	0	0.5	0.5	0.3	0.3	6.7
9	Indore	MP	1994397	0.72	0	0.5	0.5	0	0.5	0.3	6.64
10	Rajkot	Gujarat	1346192	0.72	0	0.5	0.5	0	0.4	0.3	6.54
11	Jabalpur	MP	1081677	0.96	0	0.5	0.5	0.5	0	0.3	6.4
12	Chandigarh	Chandigarh	1055450	0.72	1.2	0.5	0.5	0.5	0	0.5	6.32
13	Ajmer	Rajasthan	542321	0.96	0	0.5	0.5	0.5	0.1	0.4	5.9
14	Ludhiana	Punjab	1618879	0.72	0	0	0.5	0.5	0.1	0.4	5.84
15	Raipur	CG	1010433	0.24	1.2	0	0.5	0.5	0	0.2	5.78
16	Amritsar	Punjab	1132383	1.2	0	0	0.5	0.5	0	0.4	5.48
17	Thiruvananthapuram	Kerala	958000	0.24	1.2	0	0	0	0	0	5.32
18	Jalandhar	Punjab	862886	0.48	0	0.5	0.5	0.5	0	0.4	5.26
19	Ujjain	MP	515215	1.2	0	0.5	0.5	0	0.3	0.3	5.24
20	Ranchi	Jharkhand	1073427	0.48	1.2	0.5	0.5	0.5	0.3	0.2	5.12

Calculation basis/legend:

<https://drive.google.com/file/d/1wuntbCzYYRwXXUaUiEbFYzNj7sfWBfm9/view?usp=sharing>

Indicators :

- Industrial presence
- Migration
- Population
- Migrant to population ratio
- COVID Scenario
- Presence of an ICCC
- Migrant Resource Centres
- Political Context

Shortlisted Cities

- Bhopal
- Jaipur
- Bhubaneswar
- Surat

04. Surat City

Project Proposal 1.0

Stakeholder Engagement
Stakeholder Analysis
Landscape Mapping
City Consultations

Project Proposal 2.0

Stakeholders Engagement

Bamroli

Kailash Labour Naka

Sidharth Nagar Basti

MIGRANTS

**Owner, Kanhaiya -
Dyeing Mill Owner**

**SGCCI VP Ashish P
Gujarati**

EMPLOYERS

Dr. S.K. Mohanty

**Mr. Anurag Anthony,
Urban Management
Centre**

**Sri Tarun Kumar,
SMIMER-JSSS Shelter**

**Pradip Kumar Sahoo,
Prabasi Odiya Samaj
Trust**

**Dr. Hema Dudhwala,
SPRS Research
Foundation**

Adv. Vinay Shukla

Adv. Hemant Desai

NGO / CONSULTANT

**Sri Tejas Patel, CEO,
Surati iLab**

**Sri C.Y.Bhatt, Deputy
Commissioner, SMC &
CEO, Surat Smart City**

**Additional Deputy
Commissioner
N.V.Upadhyaya**

**Sri Ashish, Urban
Community
Development
Department, SMC**

GOVERNMENT

**Sri Girijashankar Mishra,
SMC, Leader (Ruling)**

**ISD department for
ongoing railway data
collection**

**Sri Banchhanidhi Pani,
Commissioner, SMC**

**Sri Dhaval Patel, Surat
District Collector**

GOVERNMENT

Site visits and interviews with migrants



In-depth Interviews with industry experts and government officials



Brainstorming Workshop

Stakeholder Engagement

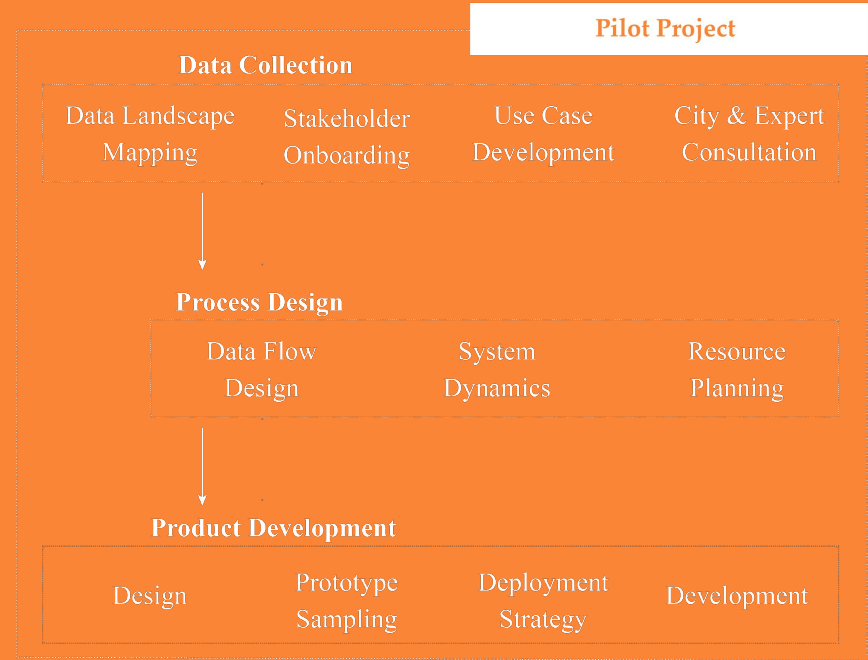
The Workshop was held to :

1. Understand the Scope of Work, functions and use cases for the Surat Migrant Cell
2. Outline basic processes for key functions - Focussed group work

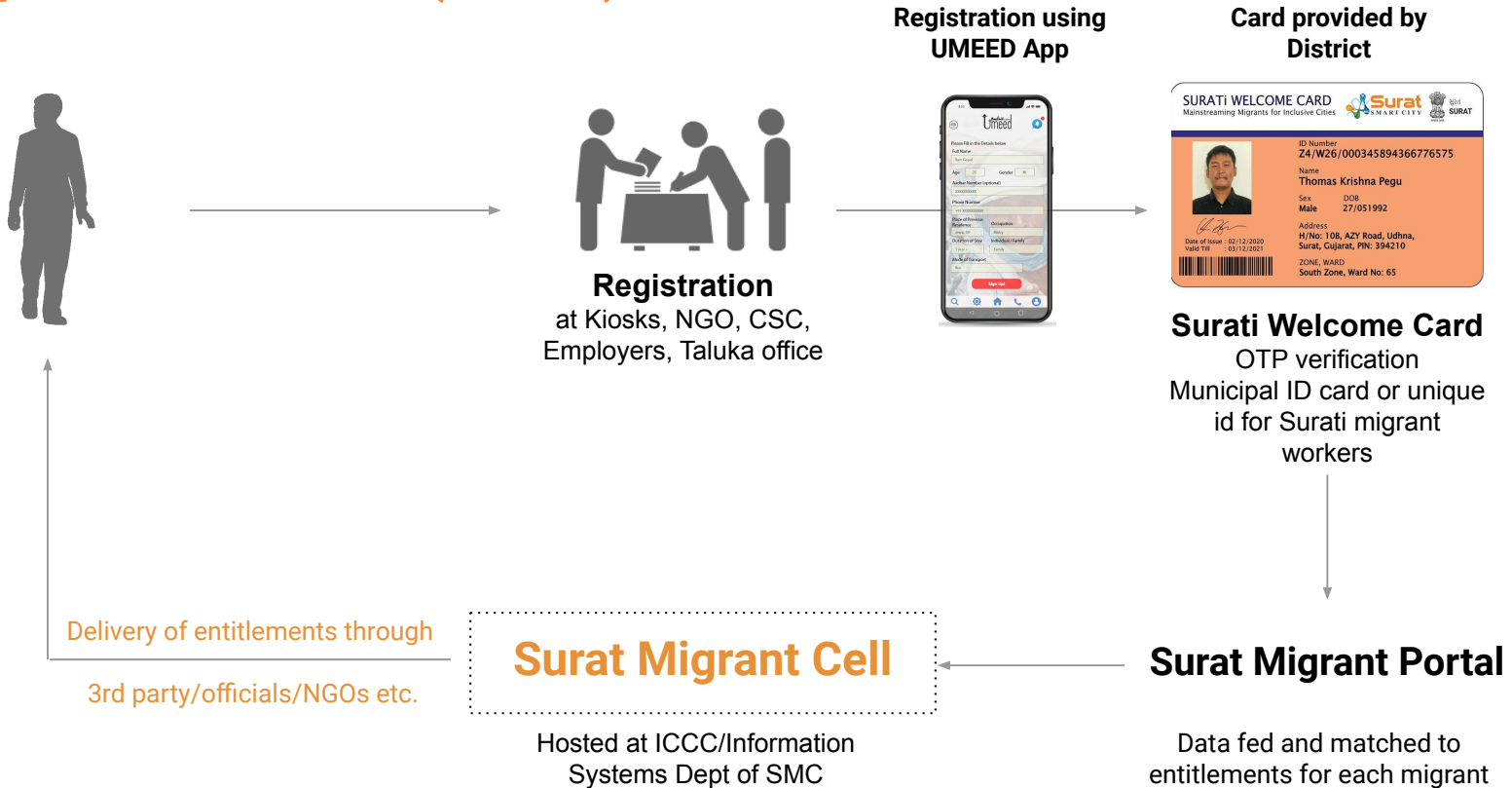
20 attendees - 11 Organisations



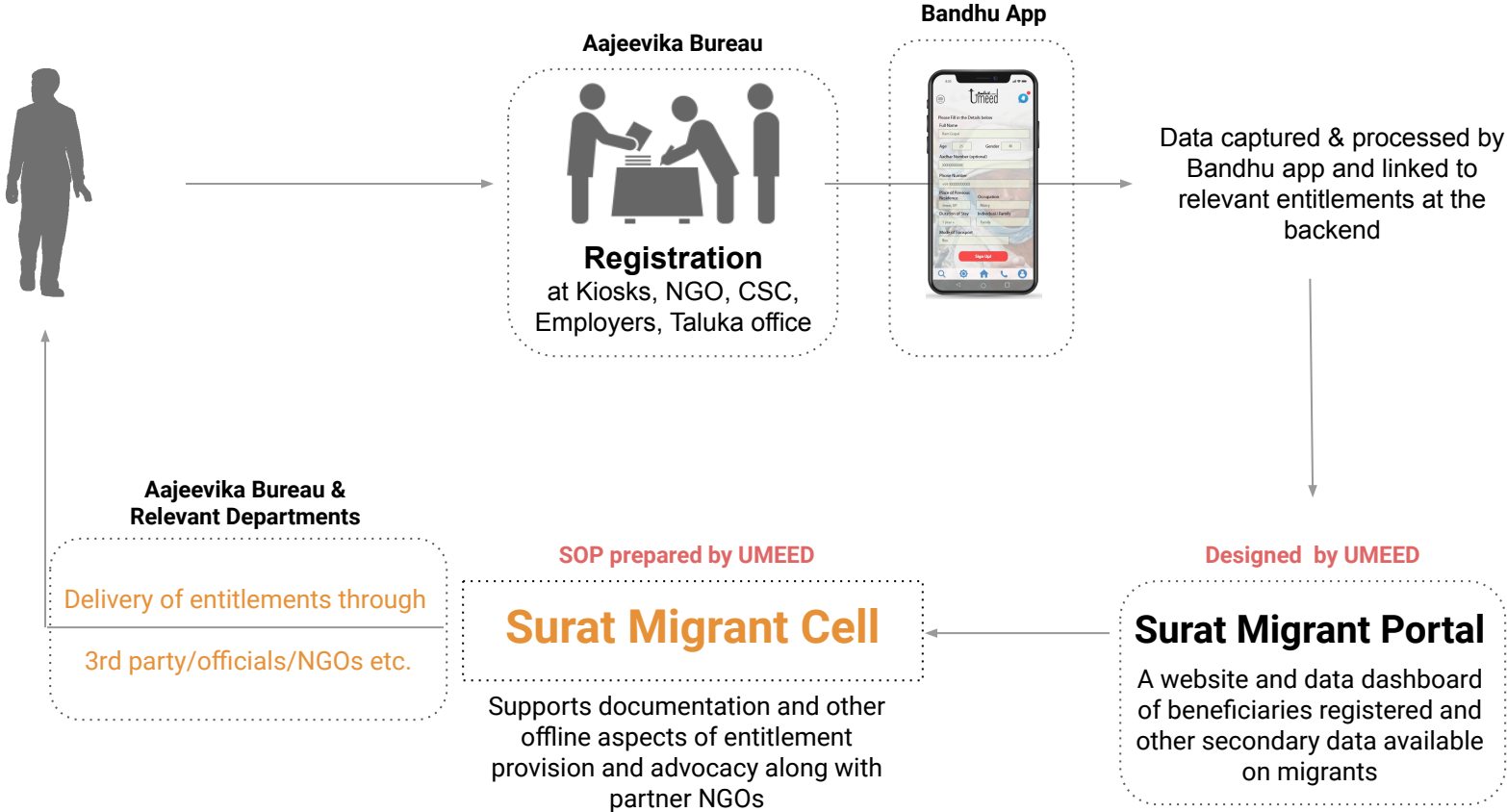
05. Final Project proposal



Proposed Process (Initial)



Proposed Process



Digital Tools

Surat Migrant Portal



Registration



Migrant Dashboard



NGO Knowledge Platform

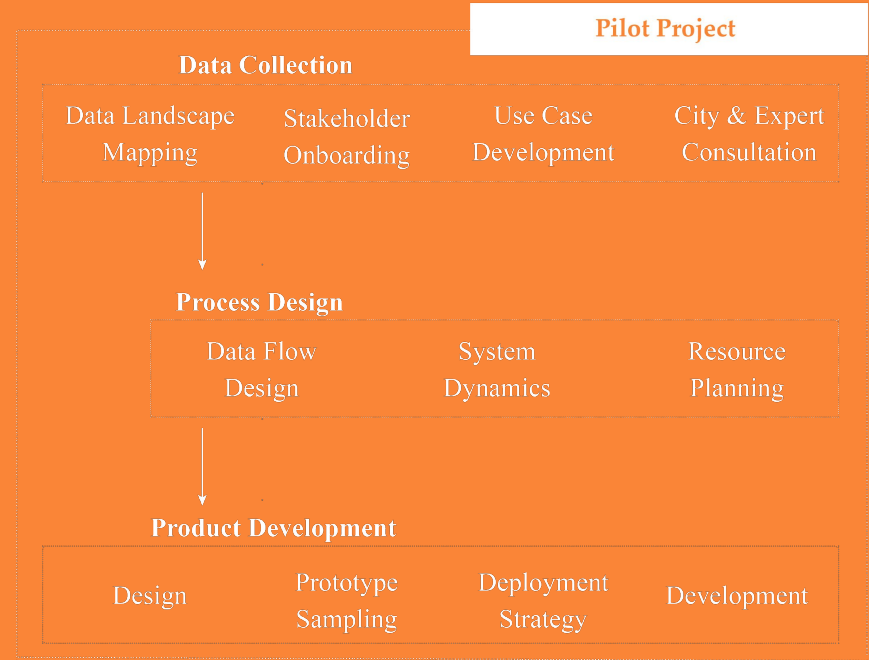
Offline Tools

Standard Operating Procedure

Functions
Use Cases
Institutional Setup



06. Pilot



A. SOP and Policy Document for Migrant Cell

What is Surat Migrant Cell?

The Surat Migrant Cell was launched on 4th January 2021, by the Honorable Union Minister for Petroleum and Natural Gas, Shri Dharmendra Pradhan. The first of its kind initiative has been taken up by the Surat Municipal Corporation under the Surat Smart City Development Limited and the National Urban Livelihood Mission. The Cell aims to be a single-window for all needs and support required by an interstate or intrastate migrant in the city.

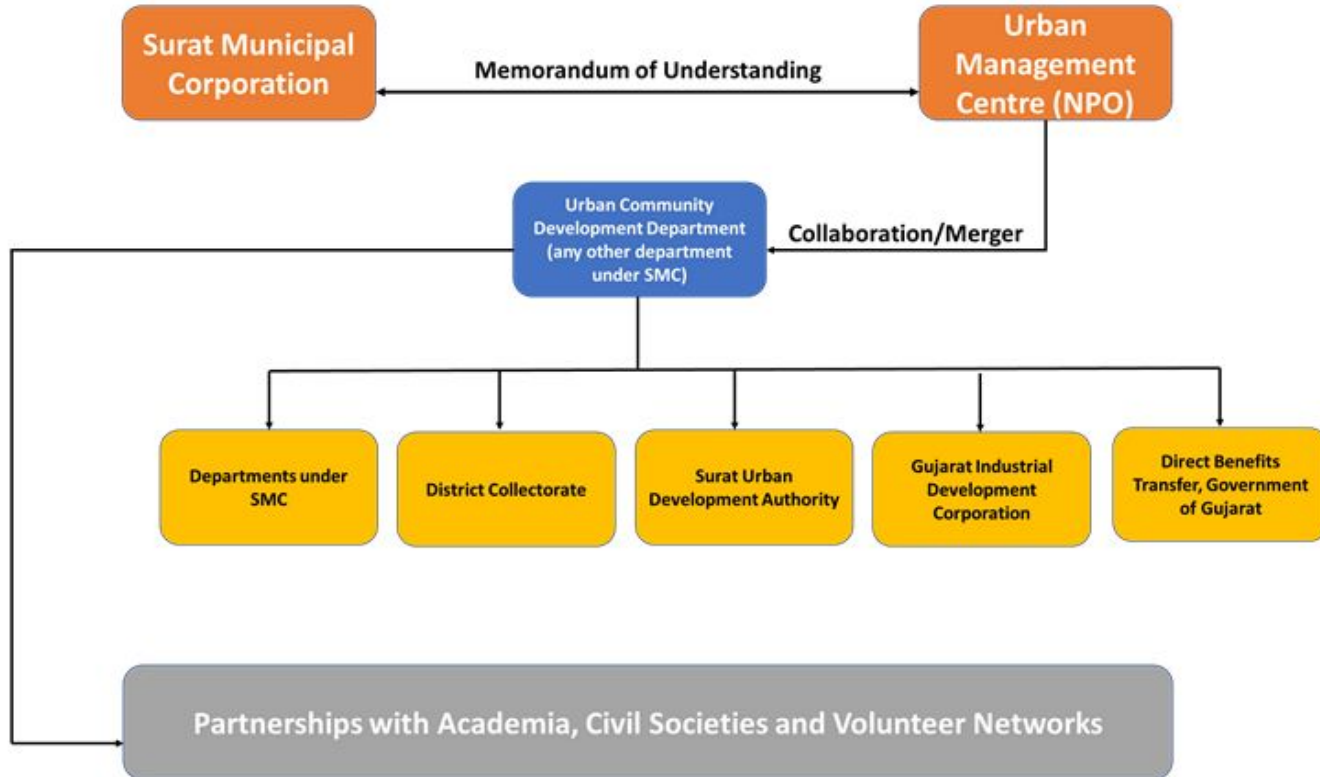


Proposed Institutional Framework

a) Registered not-for-profit



b. Department under Municipal Body

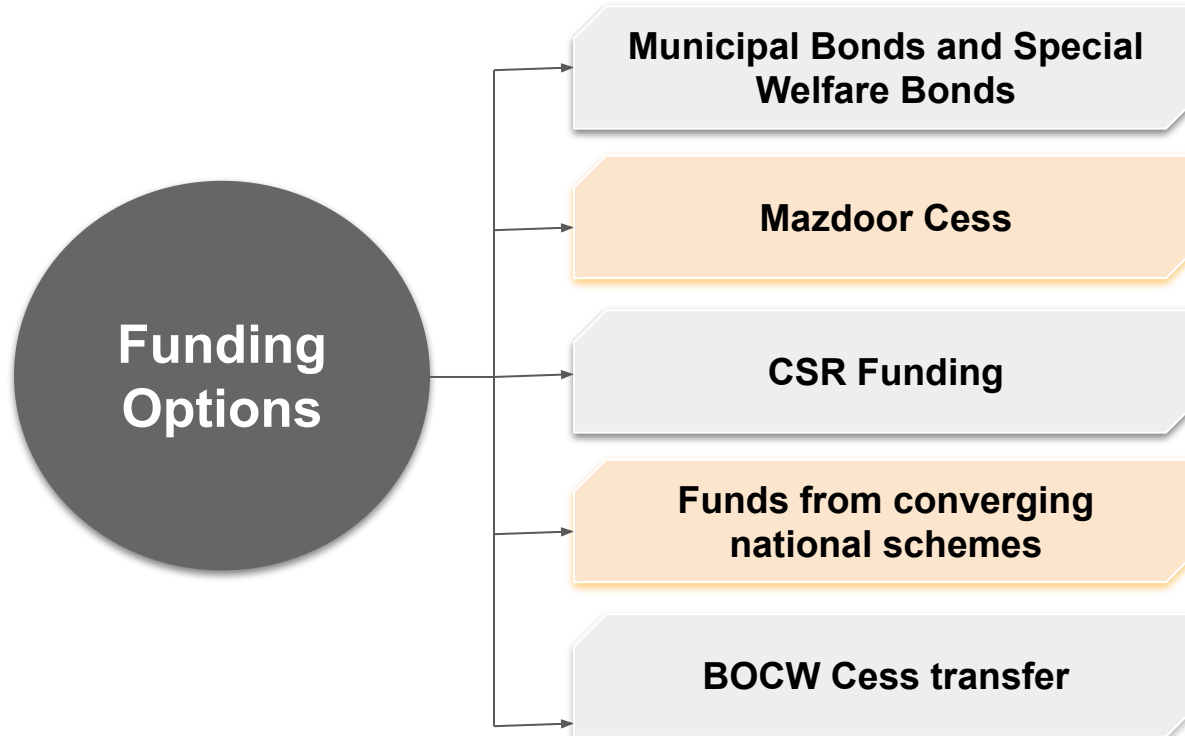


Proposed Functions of the Migrant Cell

The functions of the Cell are facilitatory in nature and inclined towards bringing stakeholders together through advocacy and forming a network. The Cell may utilise sanctioned funds (if any) through the discretion of the Board members (in case of NPO) and through the ULB in case the Cell merges with any of its departments.



Innovative Ways of Funding



B. Migrant Data Dashboard



Name of the worker

Gender

Age

Education status

Marital Status

**Single/ Family
Status- Surat.**

**Family members in
Surat**

Social Category

DEMOGRAPHIC PROFILE



**Have you been
linked to
Entitlements**

**Link Entitlement
Type**

**Identity cards &
other social
security**

ENTITLEMENTS



**Accessibility to
Primary health care**

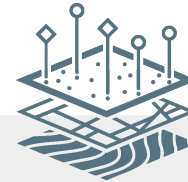
**Accessibility to
Education**

**Sanitation (Public
Toilets)**

Settlement Patterns

Aanganwadi centre

AMENITIES



**Geotagging
(Latitude &
Longitude)**

**Correspondence
Address in Surat**

Source State

SPATIAL



**Occupational
Patterns**

Industry

SKILL MAPPING

Surat Migrant Dashboard

Link for beta website

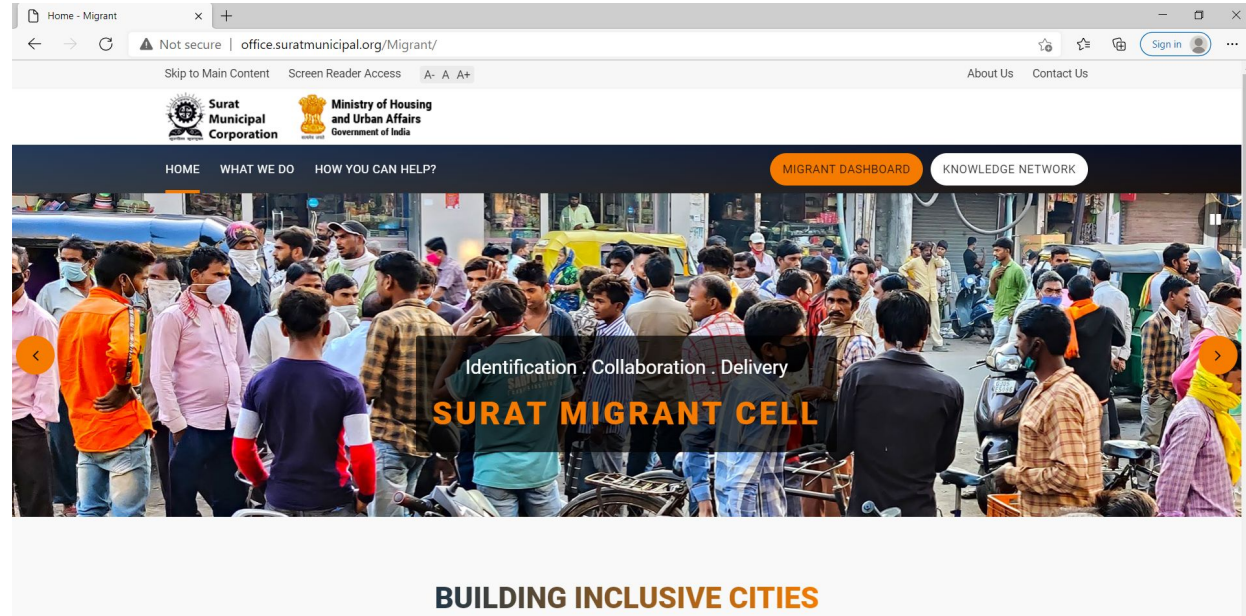
<http://office.suratmunicipal.org/Migrant/Dashboard>

- **MIGRANT PROFILE**
 - Demographics
 - Skill Mapping

- **ENTITLEMENTS**

- **ACCESS TO AMENITIES**

- **VULNERABILITY ANALYSIS**

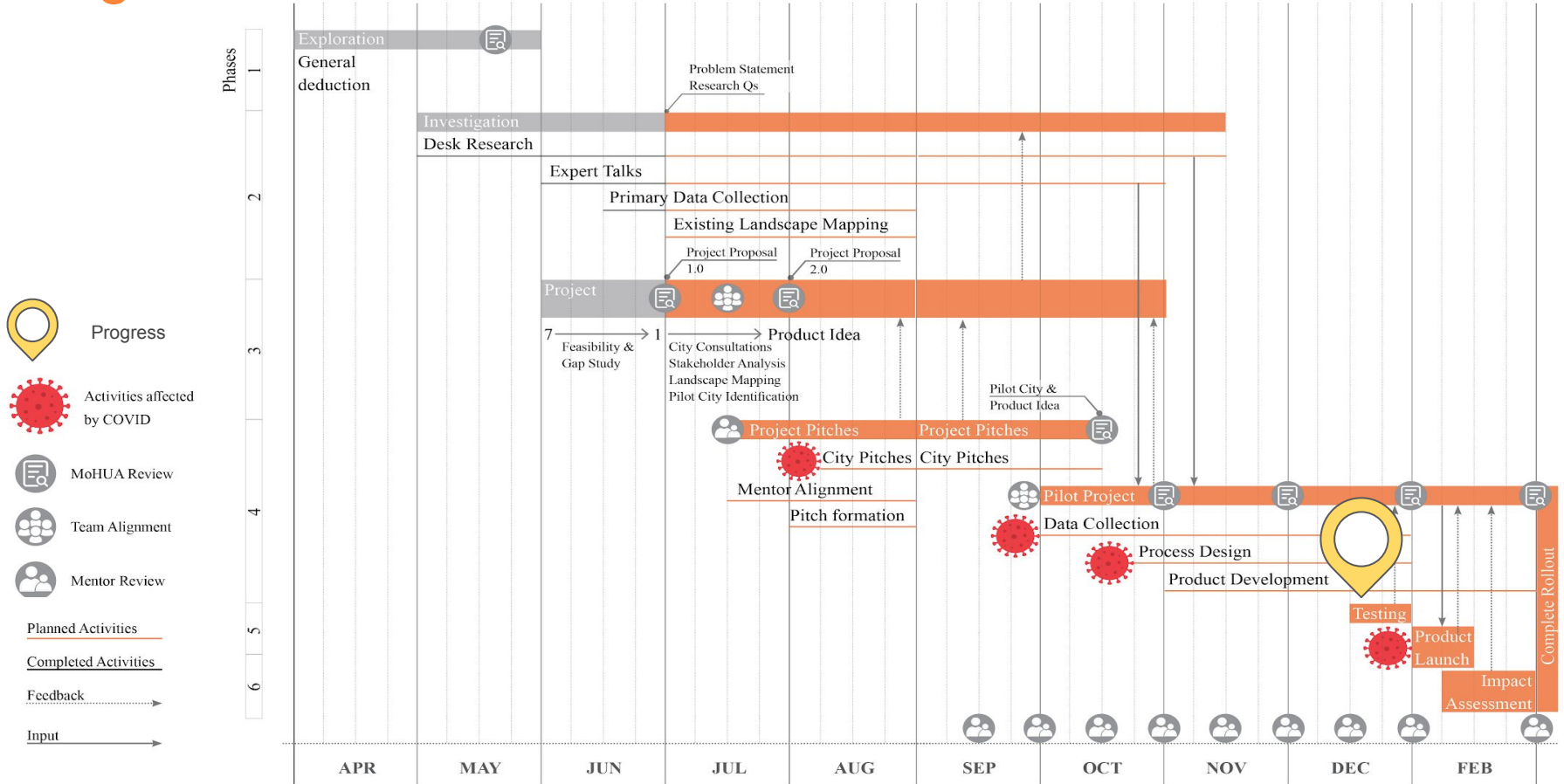


Project Critique

Way Forward



Progress



City-level Challenges



The Surat City Livelihood Centre (NULM) is understaffed and under resourced to support the operations of the Migrant Cell

Most migrant workers are located outside of the city jurisdiction hence hampering their integration



Inter-departmental coordination to holistically address the issues is difficult

Representatives of migrants are not from within the same socio-economic background



The city does not have a mandate to cater to her non-domicile citizens exclusively

Policy Challenges



Non-portability due to the mandate of domicile for nearly all local/state/central schemes or benefits leading to lack of incentive for a migrant to register

Issue of labour is a state and central subject, not city-level



Less clarity on who should be accountable for migrants - source/destination States or Centre

Multiple agencies and benefits without any common beneficiary database to work with



No universal definition of who an interstate migrant is in terms of government-provided identity

Lacunae Identified



Current solution is not an end-to-end product



Dependence on third-party for data management and outreach of the process



Excludes an important stakeholder: Industry



Funding needs to be more sustainable



Comments on the SOP document awaited from important stakeholders



Needs cooperation from multiple agencies for its success



Cities needed to be sensitized to the needs of the migrants

Steps to overcome the gaps

1

Phase-2 of the product to generate a more robust product

2

Keeping all existing agencies in the loop

3

Focus on market-driven model to ensure sustainability

4

Central push from the top for cities to consider migrant needs

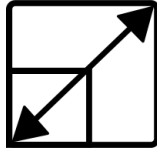
5

Pilot in another city which does not have a third-party presence

6

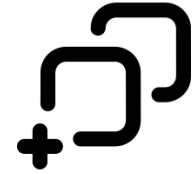
Collaboration within departments. For eg: U-WIN card of Labour Ministry with Smart City

Scalable



Manufacturing and construction industries mushroom in the peripheries of the city hence the initiative can be scaled up outside the ULB boundary and into the district jurisdiction

Replicable



The project can be replicated in other cities which observe high-levels of internal migration.

A city-migrant cell can be initiated by ULBs with the help of empaneled NGOs and Social Enterprises looking after registration of migrants to entitlement provision and other support

PHASE II

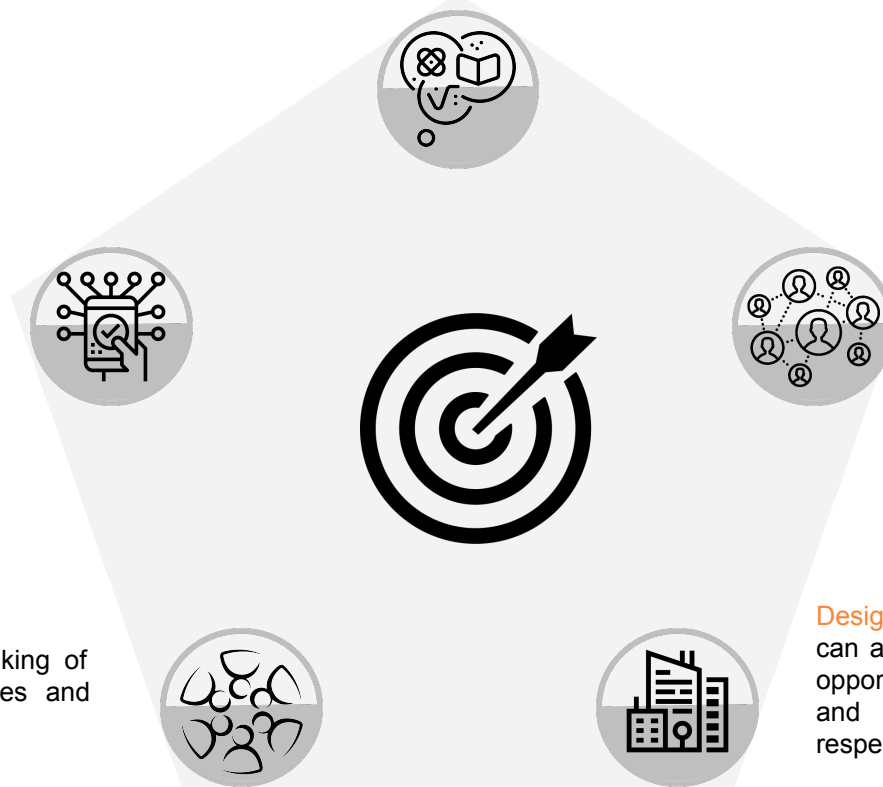
Development of knowledge exchange portals for NGOs and private players working for the migrants

Open source application for smart and feature phones for self registration of migrants and service delivery

Inclusivity Index : Ranking of cities based on policies and other indices.

Major focus on outreach of the application through third party and community leaders

Design an open city toolkit on how a city can achieve the followings: Employment opportunity for all, sense of bellongliness and contributions of migrants are respected.



Thank you!

