

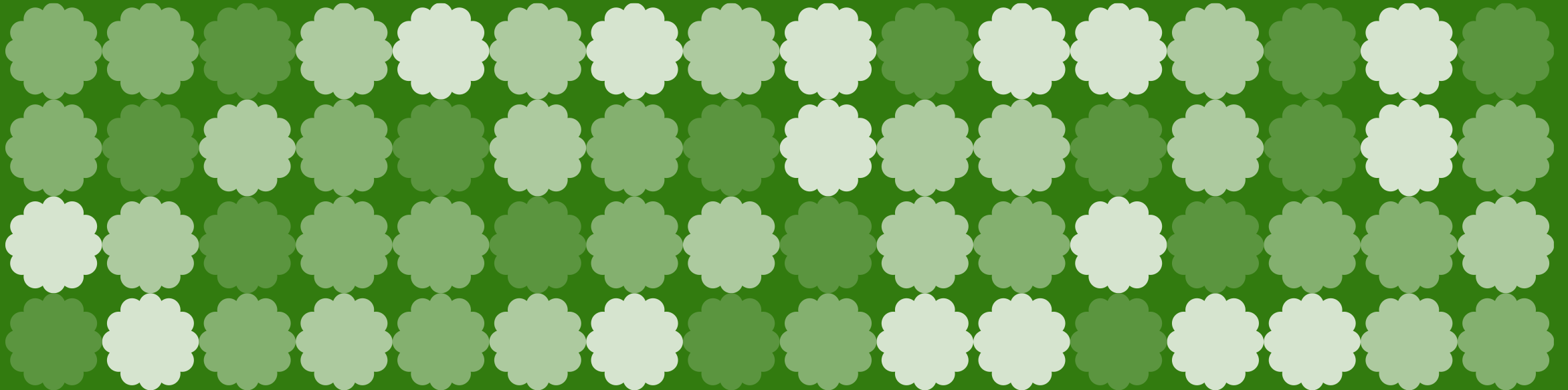


**NATURAL**  
OUR WATER. OUR FUTURE  
**COURSE**

**GREATER  
MANCHESTER**  
DOING THINGS DIFFERENTLY FOR THE ENVIRONMENT

# Urban Water Management in Greater Manchester

Mark Turner, Greater Manchester Combined Authority, 4<sup>th</sup> May 2023



**Welcome to  
Greater  
Manchester!**





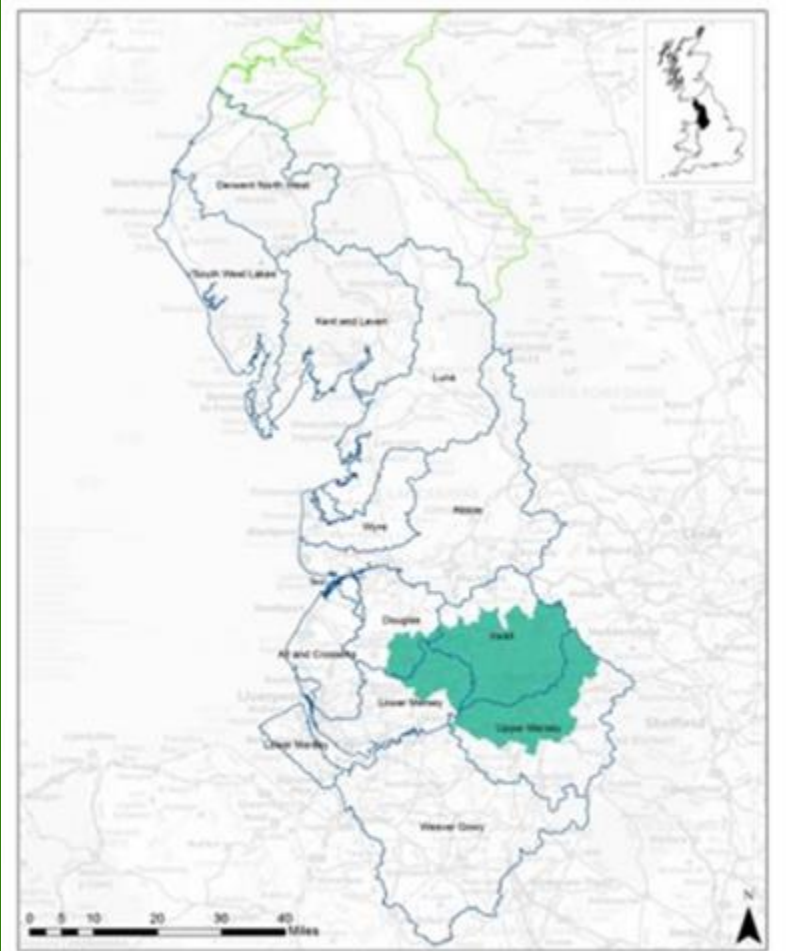
# The water challenge in Greater Manchester

- Water quantity
- Climate change and resilience
- Water quality
- Ecology

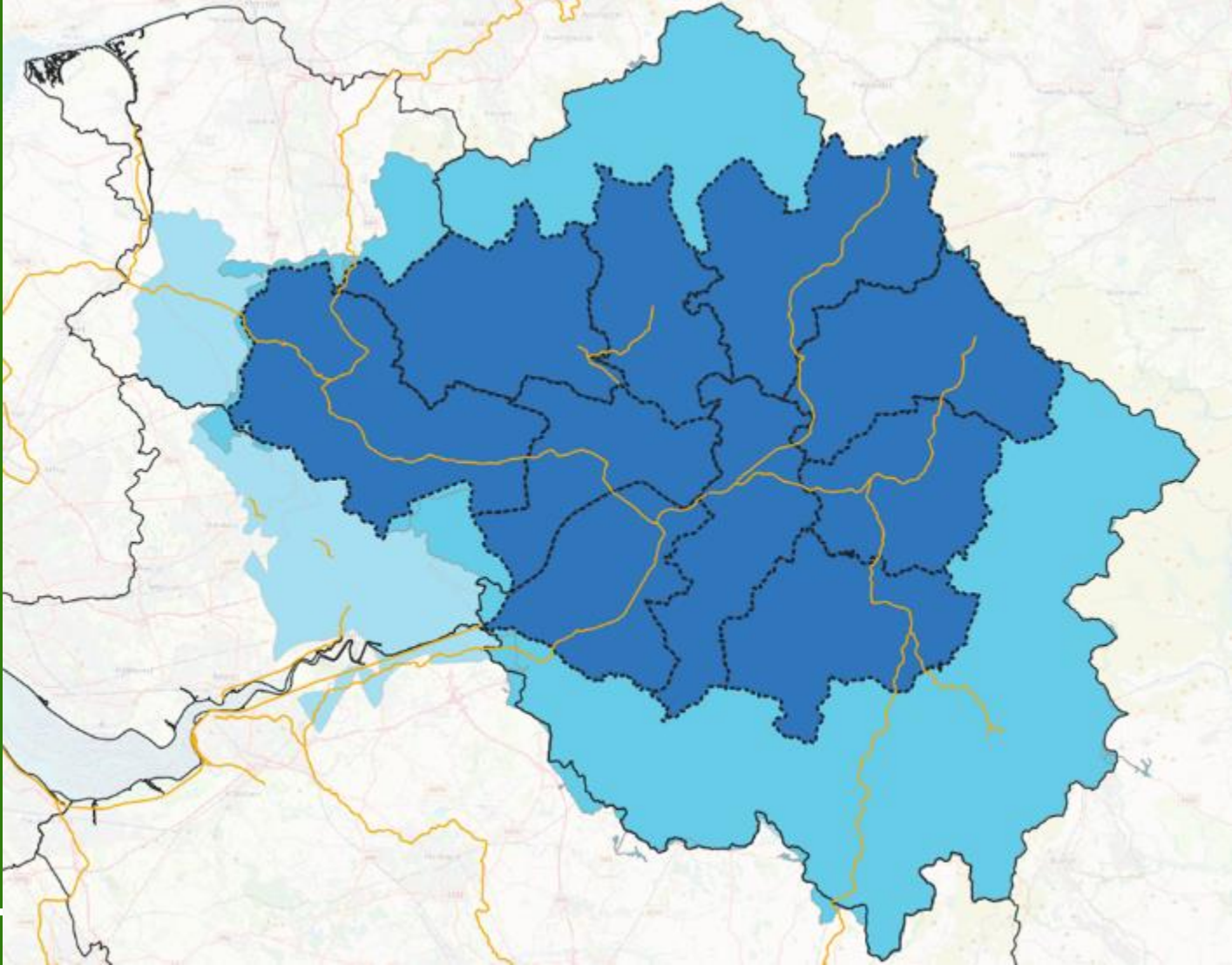




# Greater Manchester and catchment geography



North West River Basin Management Catchments  
Solway Tweed River Basin Management Catchments  
Greater Manchester



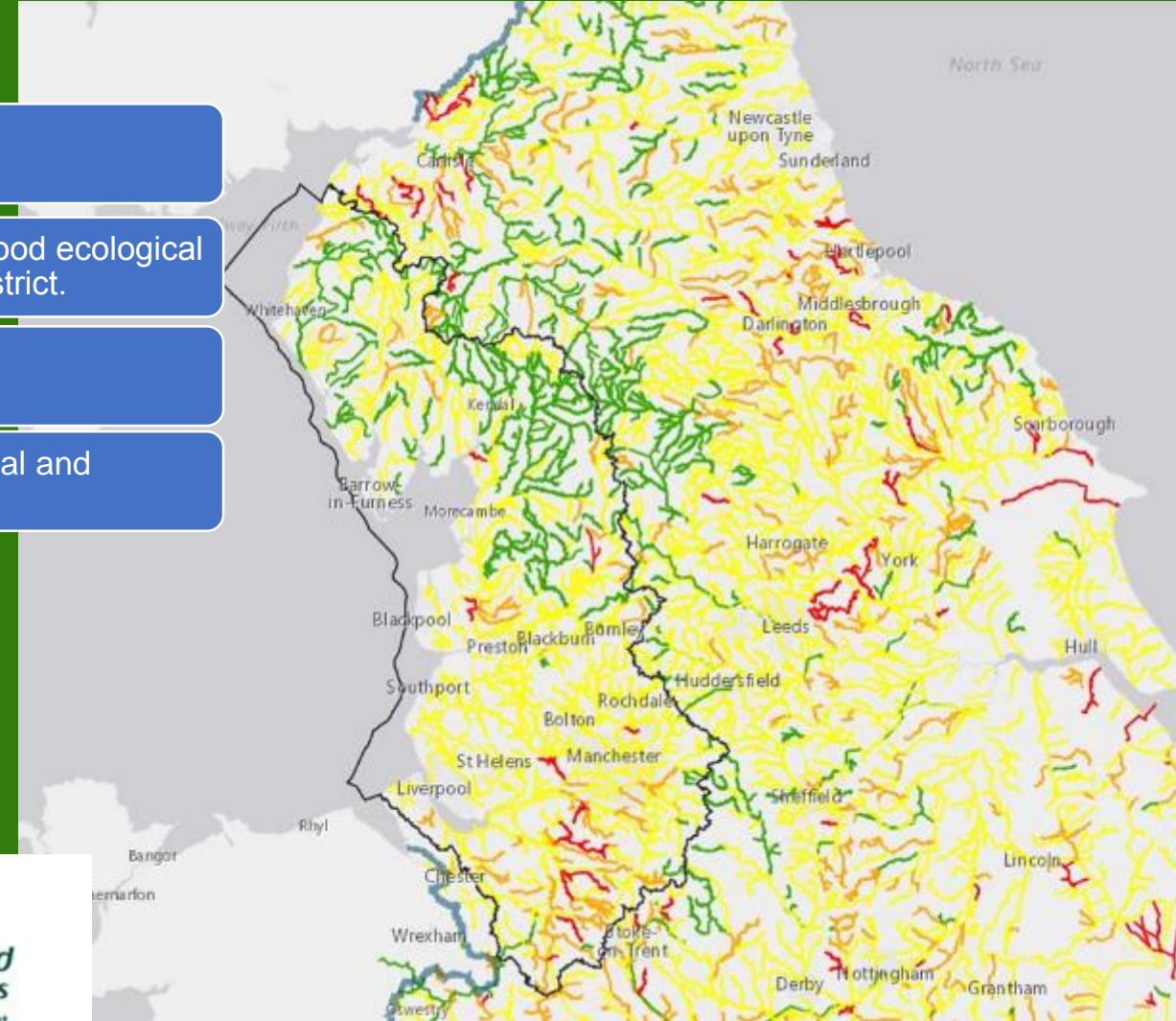
# An introduction to Natural Course

Natural Course is the UK's only EU LIFE Integrated Project

Designing projects to understand and overcome some of the biggest barriers to 'good ecological status' under the EU Water Framework Directive in the North West River Basin District.

Building capacity and testing new and innovative ways of working

Actions can be expanded and transferred, enabling us to influence policy at regional and national levels





# Delivering nature-based solutions to water challenges







## Public parks

SuDS including rain gardens, swales and trees



**Business case** Parks foundation



## Non-domestic properties

SuDS such as rain gardens and swales



**Business case** Co-investment in areas of flood risk & annual savings on waste water charges



## Commercial premises

Green roofs and walls

**Business case** Invest to save



## Streets & alleys

Street trees and community green planting

**Business case** Green regeneration



## New developments

SuDS including rain gardens, swales, trees, ponds and wetlands



**Business case** Parks Improvement Districts



## KEY

-  Preventing flooding and droughts
-  Improving air quality
-  Reducing urban heat island effect
-  Restoring biodiversity
-  Providing insulation and reducing energy consumption
-  Capturing and storing carbon
-  Encouraging local economic growth
-  Improved amenity
-  Improving health and wellbeing
-  Improving land and property value
-  Highways
-  Non-domestic property owners
-  Businesses
-  Community groups
-  Developers
-  Investors
-  Local authorities
-  Local lead flood authorities
-  Planners
-  Policy makers
-  Property maintenance companies
-  Property managers and owners
-  Water companies
-  Water quality
-  Schools



# What is Integrated Water Management?

Integrated Water Management (IWM) is a **collaborative approach to the way we plan for and manage all elements of the water cycle (reflecting and managing issues specific to place)**. It is a multidisciplinary approach relating to planning, development, operational and tactical decisions to influence the water cycle and **integrate opportunities to deliver shared outcomes**.

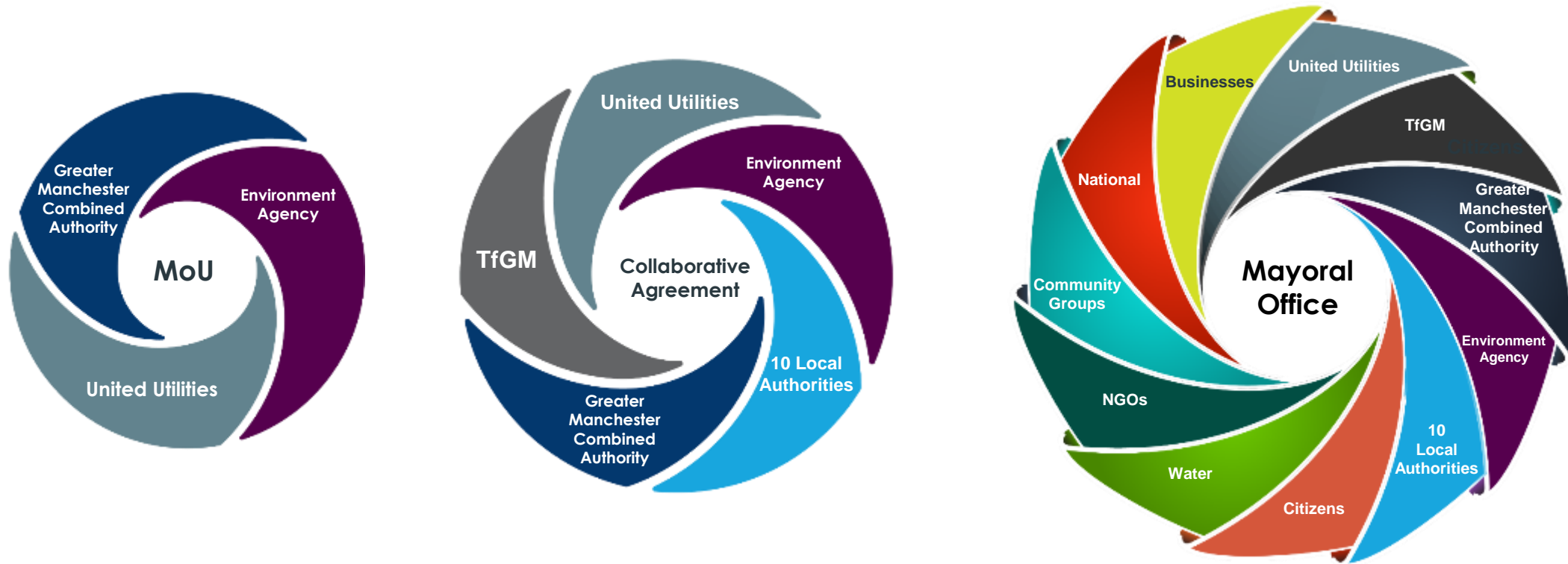
Roundtable 2022

Integrated Water Resources Management (IWRM) is a process that promotes the coordinated development and management of water, land and related resources in order to maximise economic and social welfare in an equitable manner without compromising the sustainability of vital ecosystems.

United Nations

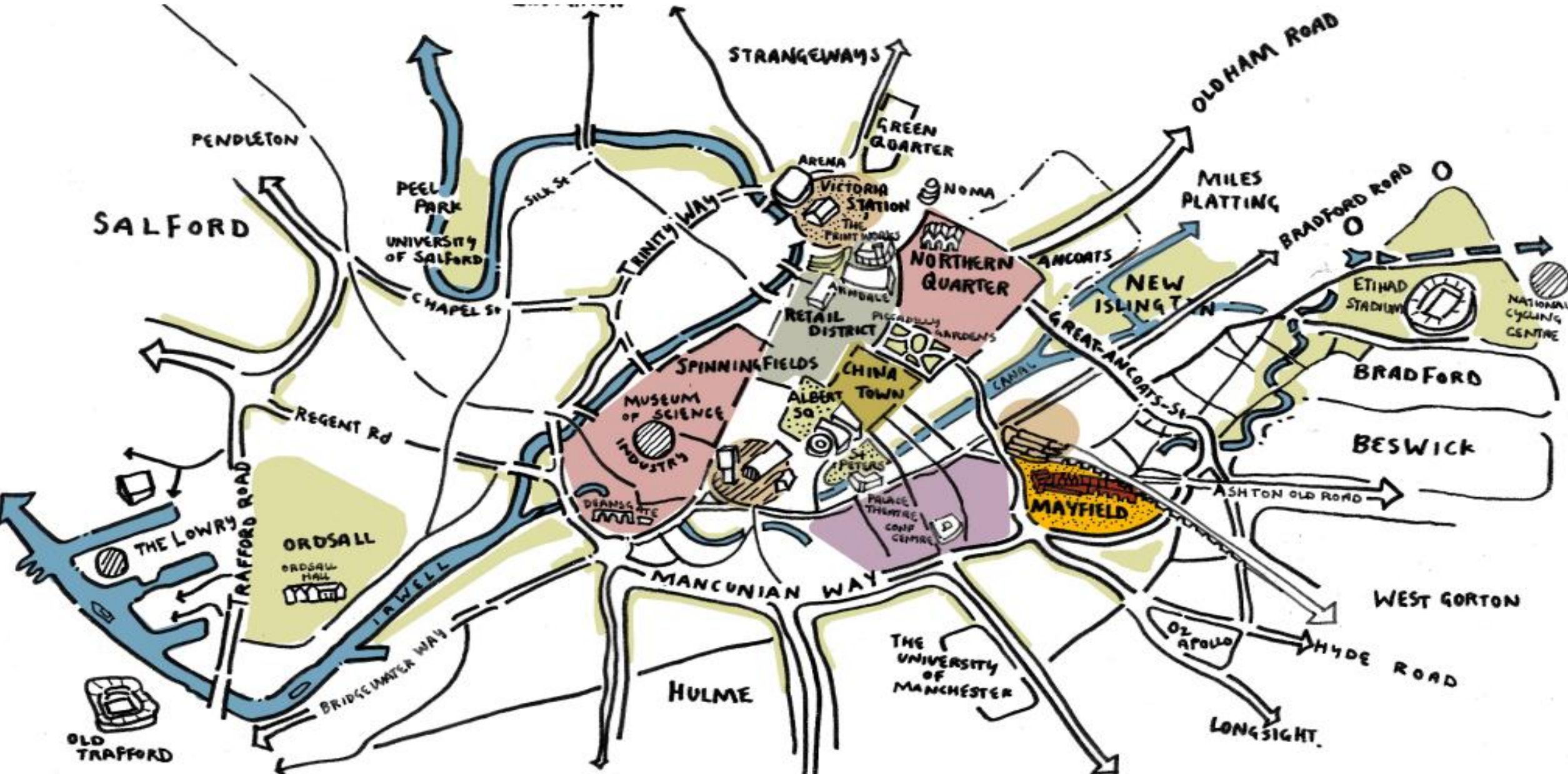


# Our success in IWM will grow as we increase the number of organisations involved and their level of participation



As we mature we move from an MoU to multisector working

# 1. Overview of the Mayfield Development









# Park Plan Phase 1



Mayfield De-

Railway Embank-

Terrace  
Garden

May 'Field'

Wildscape

Play Yard

Baring  
Street  
Arrival

Southern  
Walkway



# A new park for Mayfield





**NATURAL**  
OUR WATER. OUR FUTURE  
**COURSE**

**GREATER  
MANCHESTER**  
DOING THINGS DIFFERENTLY FOR THE ENVIRONMENT

Thank you

[mark.turner@greatermanchester-ca.gov.uk](mailto:mark.turner@greatermanchester-ca.gov.uk)

